

电热型执行器

Fig. EST31/11

适配风机盘管、地暖用直行程恒温阀

技术参数:

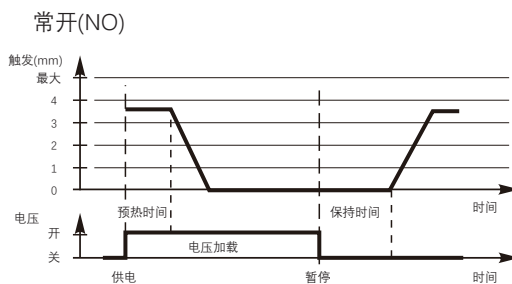
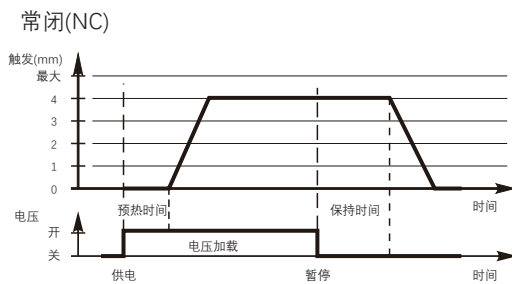
工作状态: 常开或常闭
 工作电压: AC 220V, AC 24V
 工作功率: 2.5W(220V); 3W(24V)
 工作电流: 150mA
 行程时间: 4.5min
 工作行程: 4mm
 输出推力: 90~125N
 电线规格: 2x0.5mm²; 0.75m, 白色PVC
 防护等级: IP54
 关阀高度: 11±0.2mm

阀门图例:

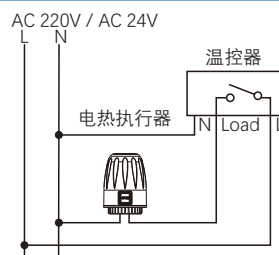


配套阀门: Fig.8940

特性曲线:



电气接线及安装:



安装说明:

第一步:

如图1, 将安装螺母旋到阀门上

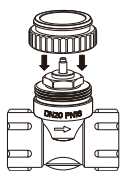


图1

第二步:

如图2, 将执行器直接按压到安装螺母上(无需工具)

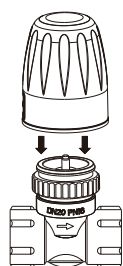


图2

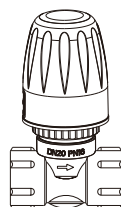
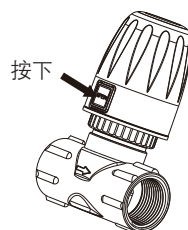


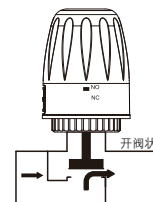
图3

拆卸步骤:

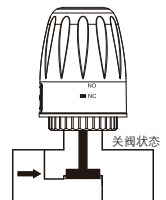
如图4, 用力按下“OPEN”按键下端, 执行器脱离安装螺母



开阀状态



关阀状态



注意: 由于产品的持续研发, 上面列出的信息可能会随时更改, 恕不另行通知